

# comstock



## Corporate Presentation

---

*NYSE American: LODE*

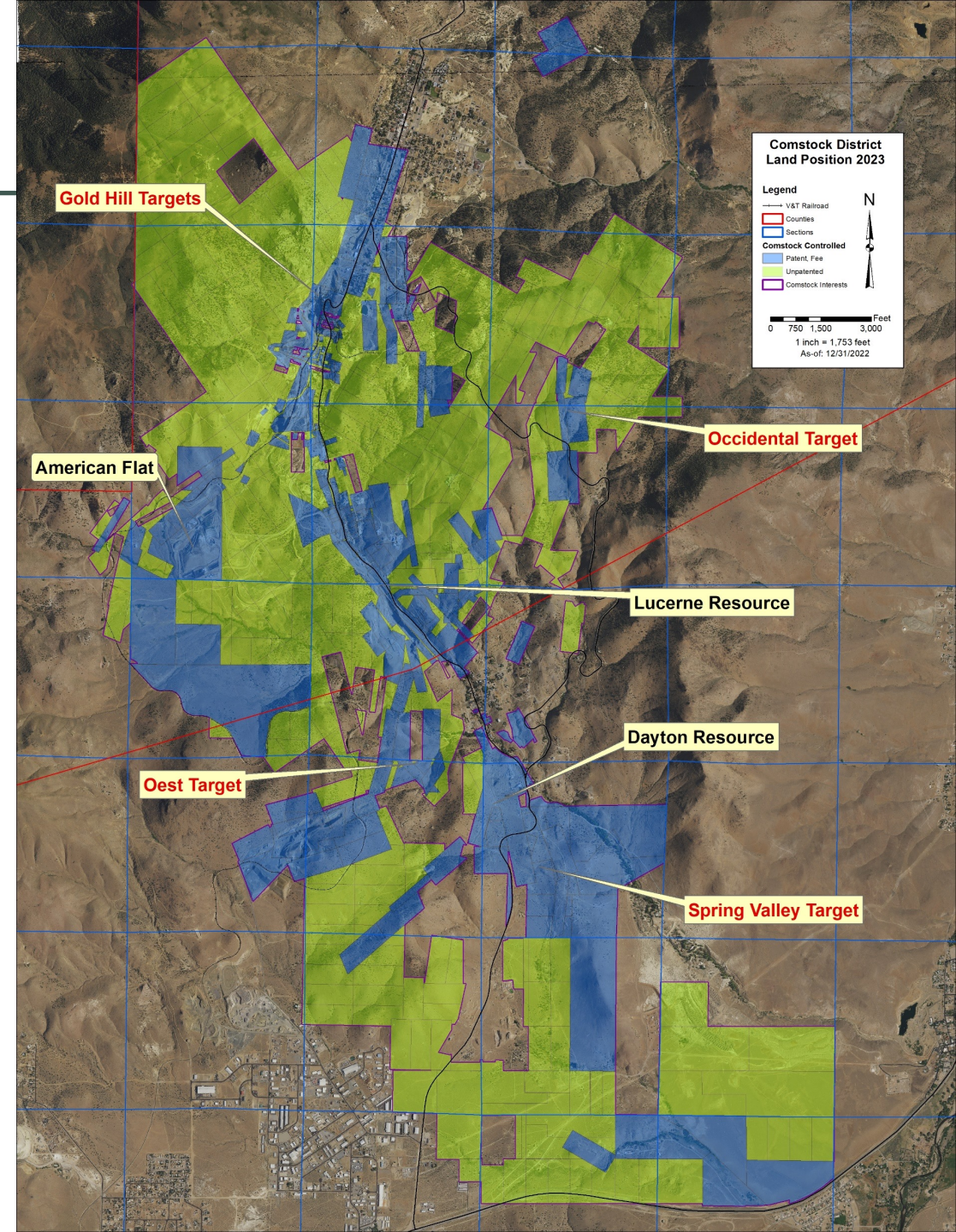
*New Orleans Investment Conference  
NOVEMBER 4, 2023*



# Comstock Mineral Estate

- Comstock consolidated twelve square miles, covering 6.5 miles of strike length over the historic Comstock and Silver City lodes.
- Historic, world-class production 8.2 million oz gold and 192 million oz silver.
- Existing mineral resources.
- Existing, permitted processing facility.
- Numerous exploration projects ***and near zero probability that all gold and silver resources have been identified.***

**We just need better tech to find it!**





# CURRENT SK-1300'S ON MAJOR GOLD & SILVER RESOURCES

DAYTON ESTIMATED IN-SITU MINERAL RESOURCES AS OF NOVEMBER 1, 2022					
(0.007 OPT AU CUT-OFF)					
	Tons	Au (opt)	Ag (opt)	Contained <sup>1</sup>	
				Au (oz)	Ag (oz)
Measured	2,650,000	0.030	0.252	80,000	670,000
Indicated	7,620,000	0.028	0.190	213,000	1,450,000
Measured and Indicated	10,270,000	0.029	0.206	293,000	2,120,000
Inferred	3,740,000	0.024	0.129	90,000	480,000
<sup>1</sup> Slight differences may occur due to rounding					

Dayton Resource 293,000 oz gold M&I, 100% owned.

Lucerne Estimated In-Situ Mineral Resources as of March 16, 2022					
(0.005 opt Au Cutoff)					
	Tons	Au(opt)	Ag(opt)	Contained <sup>1</sup>	
				Au(oz)	Ag(oz)
Indicated	2,960,000	0.022	0.270	312,000	3,759,600
Inferred	9,488,900	0.022	0.220	206,900	2,092,300

Lucerne Resource 312,000 oz gold M&I from report by Respec (MDA) March 16, 2022.

Comstock is not treating the Lucerne estimate as a current estimate of resources.

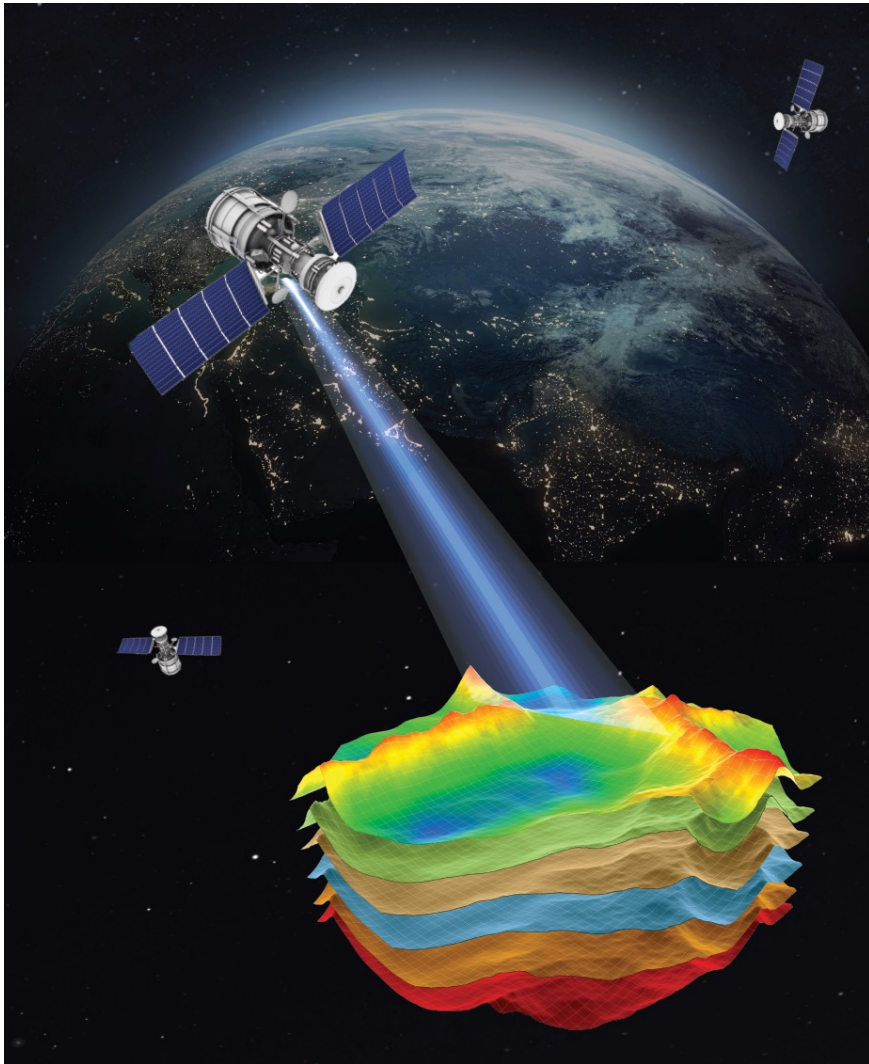


## Diverse Portfolio of Technologies Enabling Systemic Decarbonization

- ✓ **Low-Carbon Lignocellulosic Fuels**
- ✓ **Photovoltaic Panel Recycling**
- ✓ Sustainable Mining
- ✓ Physics-based Artificial Intelligence
- ✓ **Battery Remanufacturing**



# PHYSICS-BASED GENERATIVE ARTIFICIAL INTELLIGENCE



## Expanded Resource Development

- Expand the resource to over 2 million ounces of gold<sup>1</sup>
- 100% owned, leased, permitted and royalty generating silver and gold resources in the historic, world-class Comstock Lode



## High Precision Data and AI Analytics

- Hyperspectral imager enables high precision prospecting
- Developing atomistic modeling for enhanced future capability



## Sustainable Mineral Discovery

- Increase certainty in mineral discovery targets
- Reduce costs of traditional drill programs
- Increase support and discernment for identifying measured, indicated, and inferred mineral resources.





## Physics-AI Disrupt Geo-politics

- Pioneering over the past three years
- Geo-politically disruptive over the next three years



## Physics-AI Proxy Economic Power

- Impacts on GDP, productivity and security
- Redefinition of capital allocation



## Simulate, Sense & Engineer Matter

- 20<sup>th</sup> Century Witnessed the Manipulation of Data
- 21<sup>st</sup> Century is Seeing the Manipulation of Matter
- Nvidia, SpaceX, etc. Its already happening







genmat

---

***Corporate Presentation***

***Commerce Room, Third Floor***

***5:00 – 5:40 pm***

